



# DESIGN TASK FORCE MEETING #1

## PENDLETON ELEMENTARY SCHOOL WHOLE SITE MODERNIZATION

SIGN IN HERE →







**FOR UPDATES & UPCOMING  
MEETINGS ON THIS TOPIC:**

# Sign In Here



*Scan the QR Code with the camera  
on your smartphone, then follow  
the link to the sign-in sheet.*



# AGENDA & INTRODUCTIONS

- Project Goals
- Dr. Pendleton History
- Anticipated Project Schedule
- Completed & Ongoing Projects
- Neighborhood Emphasis
- Existing Campus Overview
- Open Discussion

## PROJECT LEADERSHIP

School Principal  
**Lindsay Michaliszyn**

SDUSD Project Manager  
**Silvie Meloan**

Design Team  
**DAHLIN**

# PROJECT GOALS

- Improve campus security and safety
- Comply with current accessibility standards
- Improve campus aesthetic and identity
- Rebrand graphics
- Modernize classrooms
- Centralized Administration area
- Kindergarten and UTK classrooms
- Improvements to Joint Use Field





# DR. BERTHA PENDLETON HISTORY

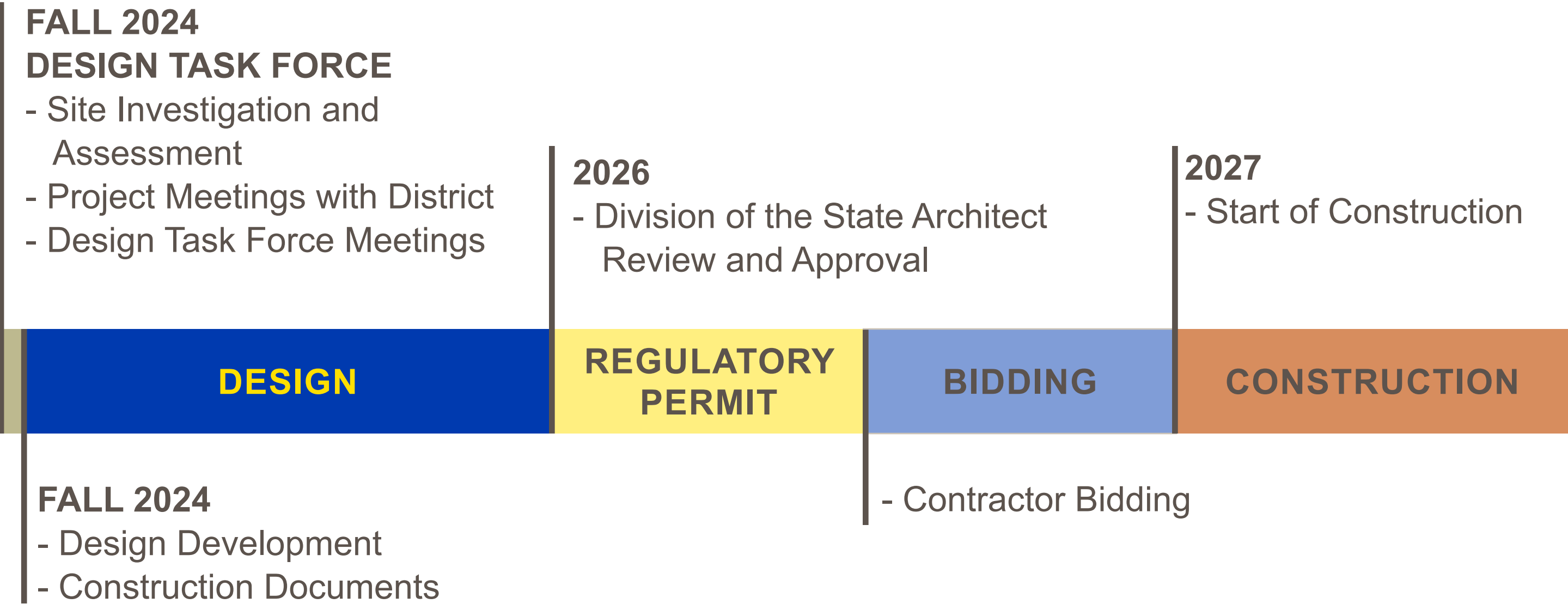
SERVED SDUSD FROM 1957-1998

- Born in segregated Alabama
- Started her career as a cartographic engineer
- Worked as third grade teacher, middle school math teacher, Counselor, Vice Principal, Principal...all the way to Superintendent!
- First female and first African American Superintendent of San Diego Unified School District



SOURCE: San Diego Union Tribune

# ANTICIPATED PROJECT SCHEDULE





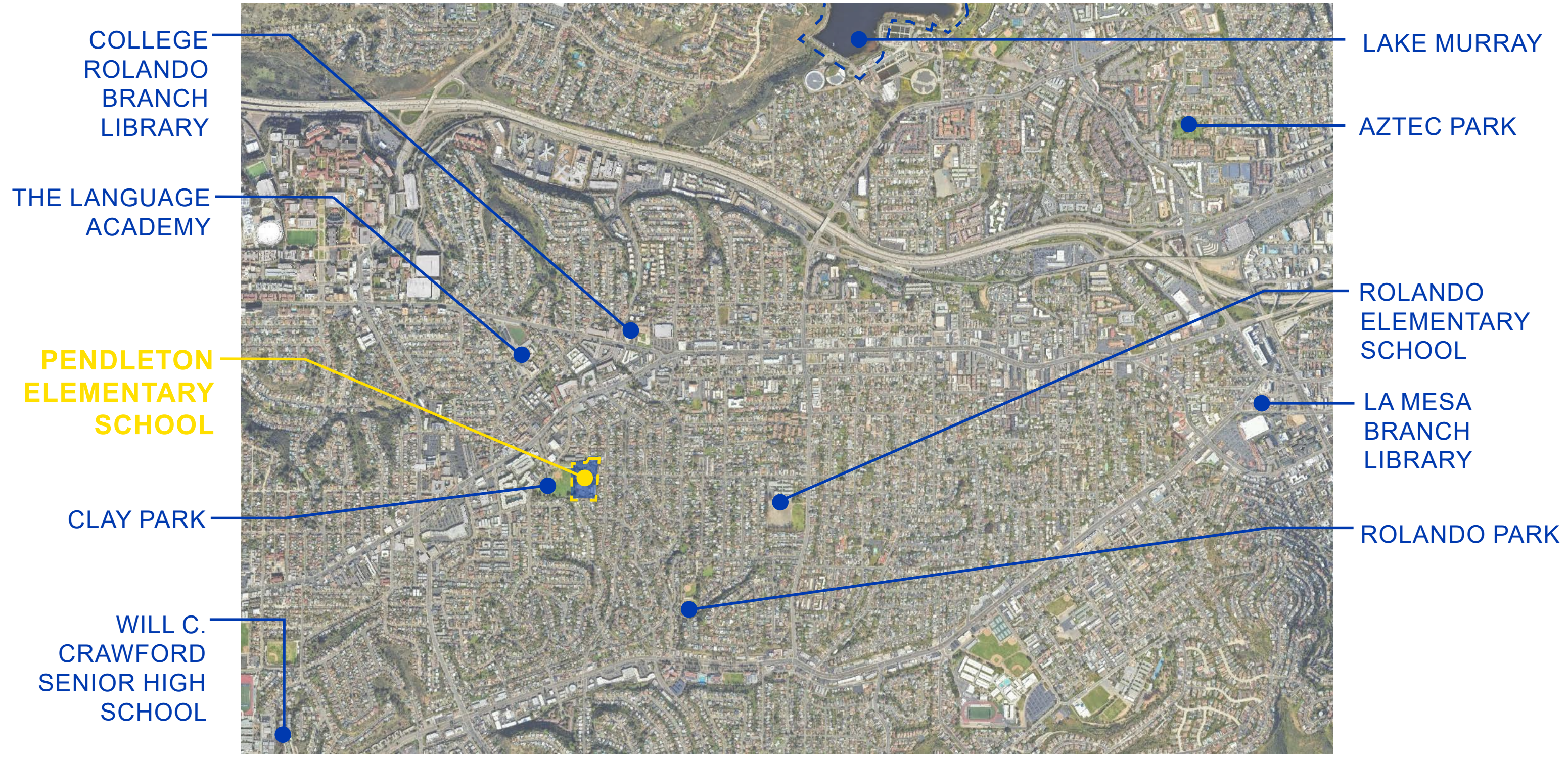
# COMPLETED & ONGOING PROJECTS

- **1956 Original Construction**
- Completed Projects:
  - 2001 Portable Buildings Installation
  - 2002 Library Construction
  - 2005 Agreement with City of San Diego for Joint Use Field
  - 2007 Whole Site Modernization including Lunch Court Shelter Installation
  - 2014 & 2018 HVAC Upgrades
  - 2022 Shade Structure Installation
- Upcoming Projects:
  - **Solar Array Shade Structure Installation**
  - **Whole Site Modernization**





# NEIGHBORHOOD EMPHASIS



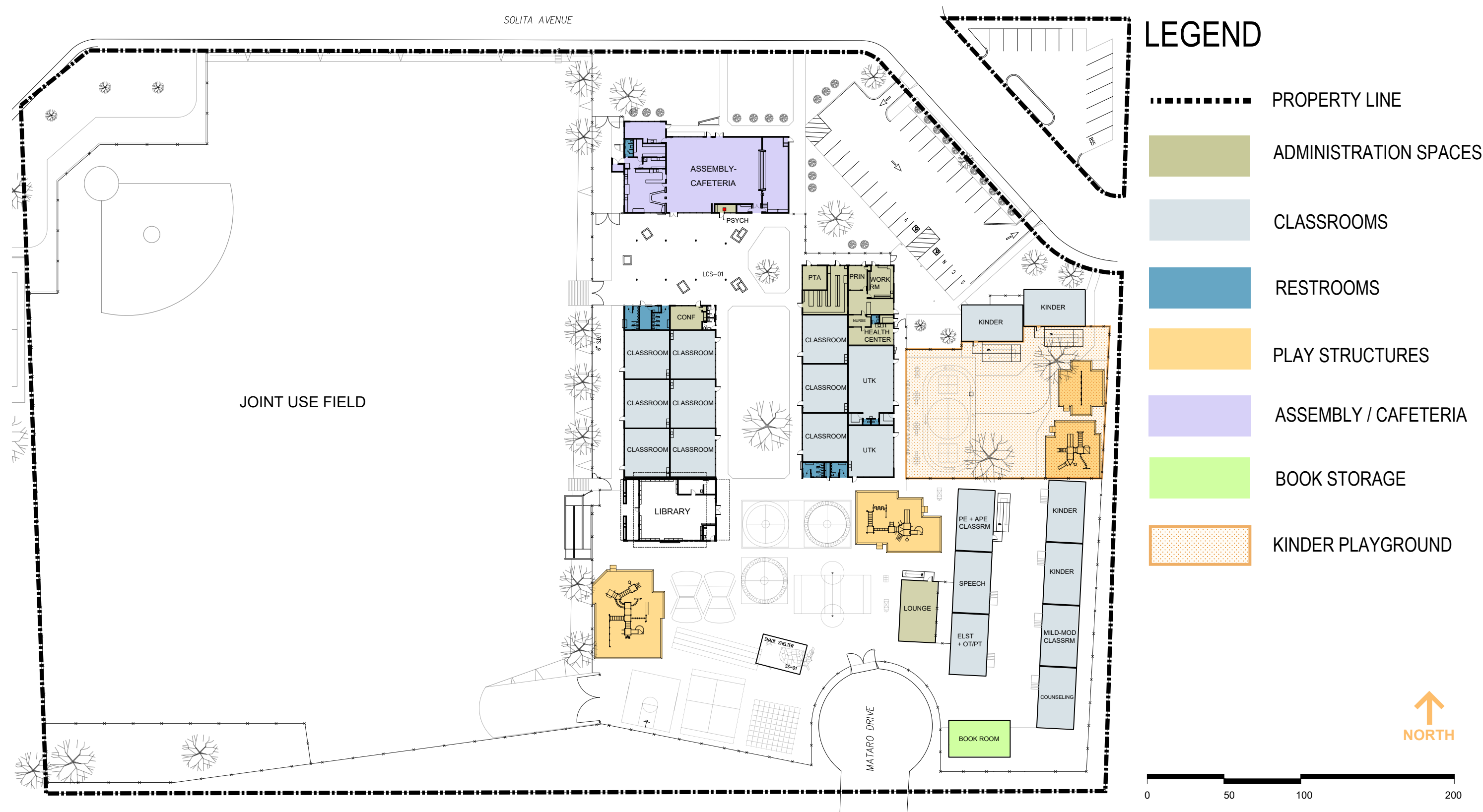


# EXISTING CAMPUS OVERVIEW





# EXISTING CAMPUS OVERVIEW





# EXISTING SITE CONDITIONS



**MAIN ENTRY**



**LIBRARY**



**MAIN ENTRY**



**KINDER PLAY YARD**



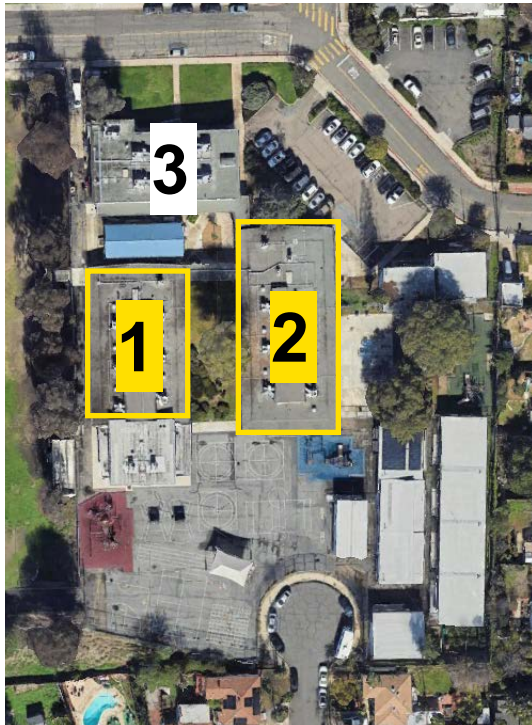
# BUILDING 1 & 2 - CLASSROOMS



**CLASSROOM INTERIOR**



**CLASSROOM WINDOWS**



**CLASSROOM INTERIOR**



**BUILT-IN CABINETRY**



# BUILDING 2 - ADMINISTRATION

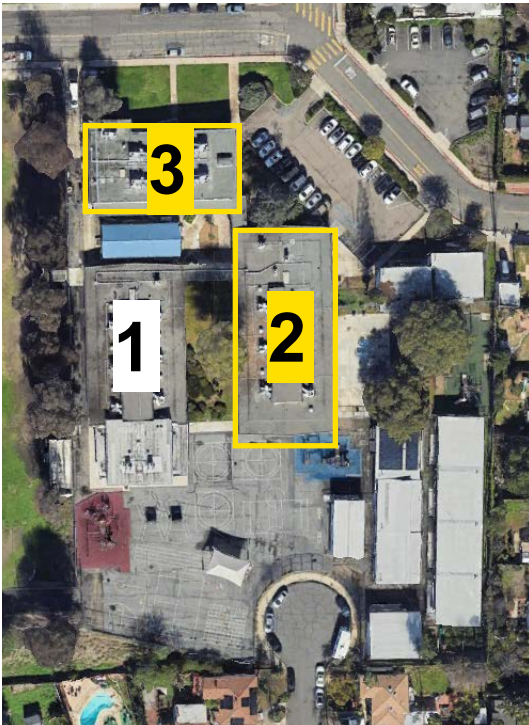
# BUILDING 3 - ASSEMBLY, INDOOR DINING/SERVERY



ADMINISTRATION AREA



ADMINISTRATION AREA



ASSEMBLY STAGE



INDOOR DINING



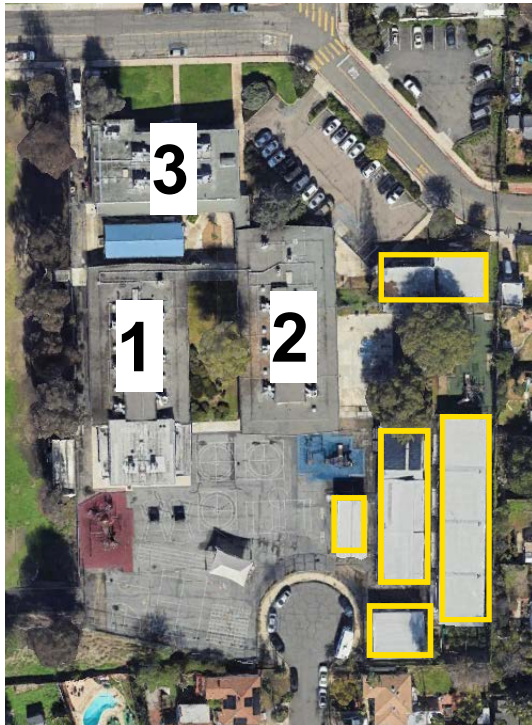
# EXISTING PORTABLES



**CLASSROOM INTERIOR**



**EXTERIOR VIEW**



**CLASSROOM INTERIOR**



**TEACHER'S LOUNGE**



# OPEN DISCUSSION







THANK YOU!

SIGN IN HERE →

